

DIGITAL PREVENTER - 2CT
MODEL - MCS_3P2CDR



CUSTOMER CARE
+91 91596 34445



You  Tube

The **DIGITAL PREVENTER – 2CT** is a digital device designed to protect 3-phase motor from dry run amps, overload amps, phase failure, and phase reversal. It offers accurate monitoring and control of your motor performance, ensuring efficient operation and preventing damage. It is suitable for submersible pumps, and HVAC systems that utilize 3-phase motors.

SPECIFICATION:

MODEL	: MCS_3P2CDR
TYPE	: DIGITAL
BOX	: METAL BOX
COLOUR	: BLUE, WHITE
INPUT SINPLY	: 3-PHASE
OPERATING VOLTAGE	: 440 VAC
PACKAGE CONTAINS	: 1x DIGITAL PREVENTER 2CT, 2x CT COIL 40A, 1x USER MANUAL.

FEATURES:

- 16x2 LCD DISPLAY.
- SINGLE PHASE PREVENTER.
- HIGH & LOW VOLTAGE PROTECTION.
- PHASE FAILURE & PHASE REVERSAL PROTECTION.
- DIFFERENT VOLTAGE PROTECTION.
- OVER LOAD & DRY RUN AMPS PROTECTION.
- CURRENT SENSING PHASE -2(2CT).
- INDIVIDUAL AMPS SETTINGS OPTION.
- VOLTAGE & AMPS CALIBRATION OPTION.
- CYCLIC TIMER OPTION.
- DRYRUN RESTART TIMER OPTION.
- AUTO START TIMER OPTION.
- STAR DELTA TIMER OPTION.
- EXTRA TIMER OPTION.
- WATER LEVEL CONTROLLER OPTION.
- 12V OUTPUT FOR KIRTI RELAY OPTION.

ADVANTAGES:

- SUITABLE FOR ALL BUTTON STARTER.
- DIGITAL VOLT & AMP METER.
- ACCURACY WITH TRIPPING & DISPLAY FAULT STATUS.
- USER FRIENDLY TIMER AND VOLTAGE SETTINGS.
- AUTO / MANUAL MODE OPERATION.
- 2PHASE/3PHASE OR 3PHASE MODE OPERATION.
- EASY INSTALLATION AND MAINTENANCE.

DESCRIPTION:



1. SEQUENCE LED.
2. 7SEGMENT LED DISPLAY.
3. AUTO/MANUAL SWITCH.
4. SET BUTTON.
5. INCREMENT BUTTON.
6. DECREMENT BUTTON.
7. INPUT/OUTPUT CONNECTOR.

MANUAL FUNCTION:

Set auto/ manual switch into manual position and then turn on power supply. Now controller is ready to monitor the power supply condition and sequence led will glow, now use green pushbutton to turn on the motor and red push button to turn off the motor. The Dryrun preventer will turn off the motor when dry amps, overload amps and voltage fluctuation condition.

AUTO FUNCTION:

Set auto/ manual switch into auto position and then turn on power supply. Now controller is ready to monitor the power supply condition and sequence led will glow. In auto function, a cyclic timer, which will allow the user to switch ON or OFF the motor on user's set time. Auto start timer will be enabled only in auto mode, and it is used to turn on the motor automatically when the power is on, based on user set time. The dryrun preventer will turn off the motor when dry amps, overload amps and voltage fluctuation condition.

2P/3P SWITCH FUNCTION:

A 2P/3P switch is used to set 2Phase/3Phase mode or 3Phase mode only operation and DC led is used to indicate 2phase power supply. If 2Phase/3Phase mode is enabled the motor will turn on in 2Phase or 3Phase condition. If 3Phase mode is enabled the motor will turn on only in 3phase condition.

WIRING DIAGRAM:

Fig 1: 3PHASE DOL STARTER CONNECTION DIAGRAM.

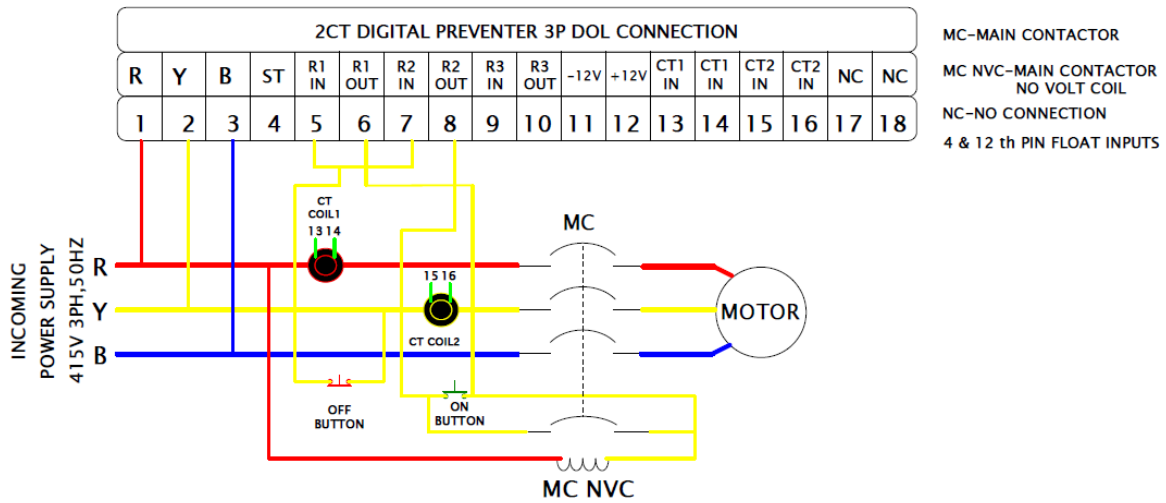
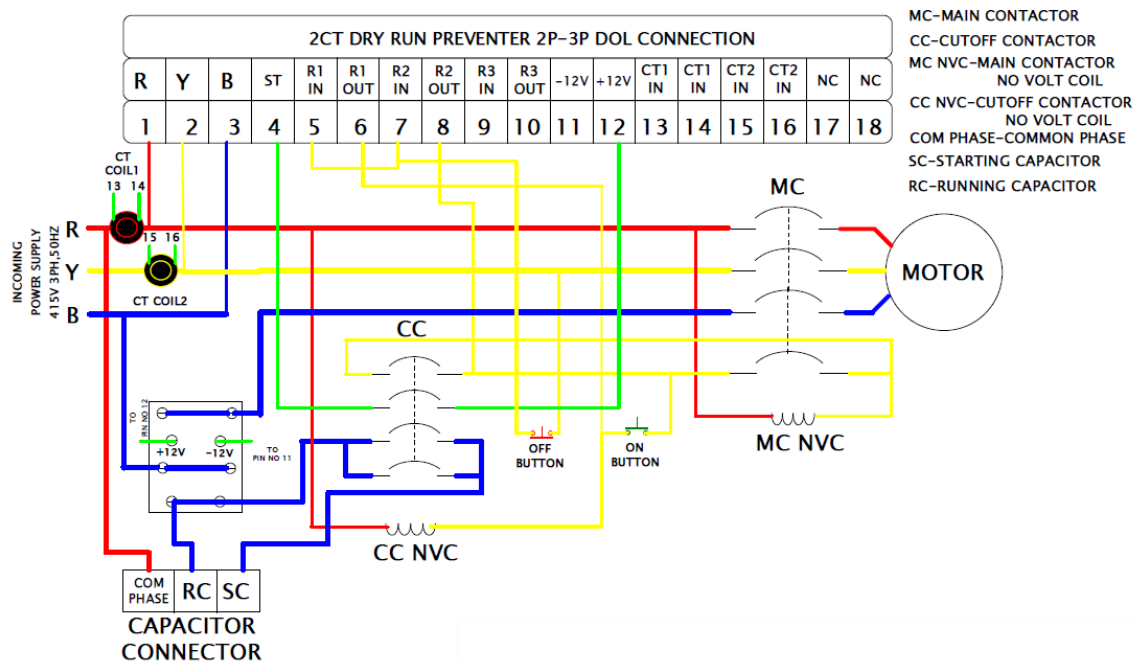


Fig 2: 2PHASE /3PHASE DOL STARTER CONNECTION DIAGRAM



NOTE: ALWAYS DISCONNECT POWER BEFORE INSTALLATION OR MAINTENANCE

Fig 3: 3PHASE STAR DELTA STARTER CONNECTION DIAGRAM.

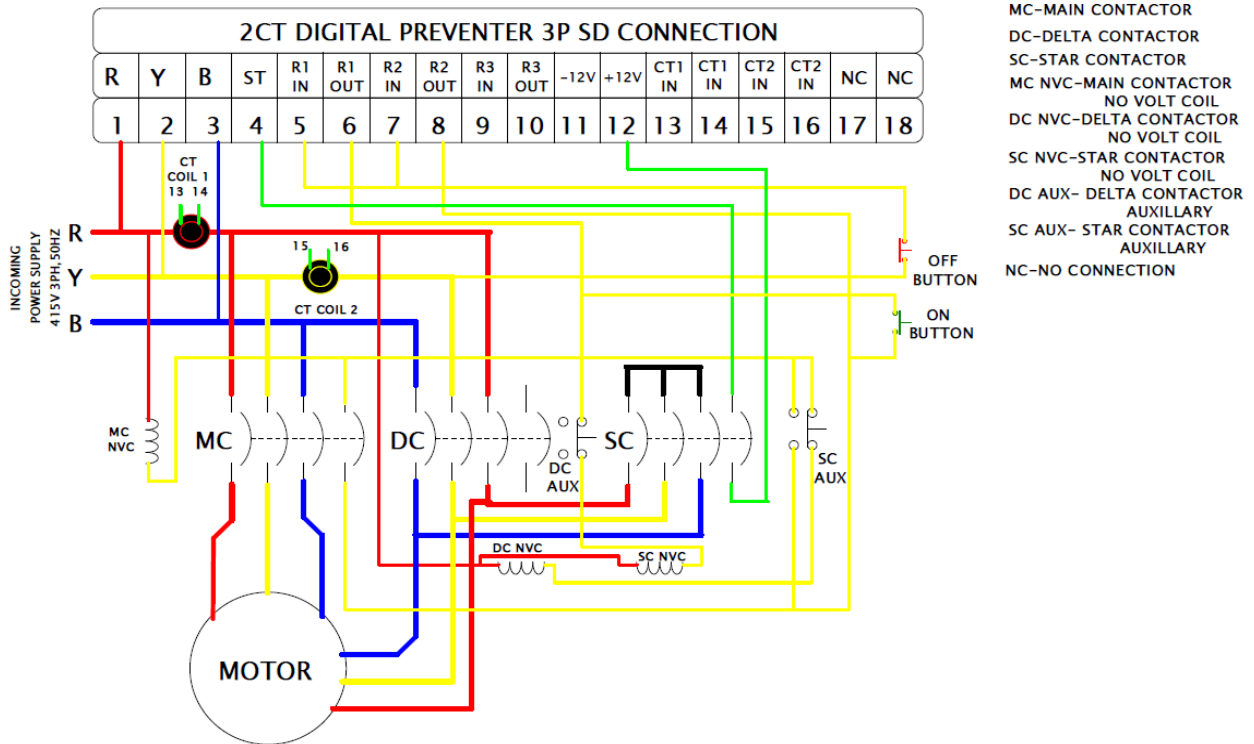
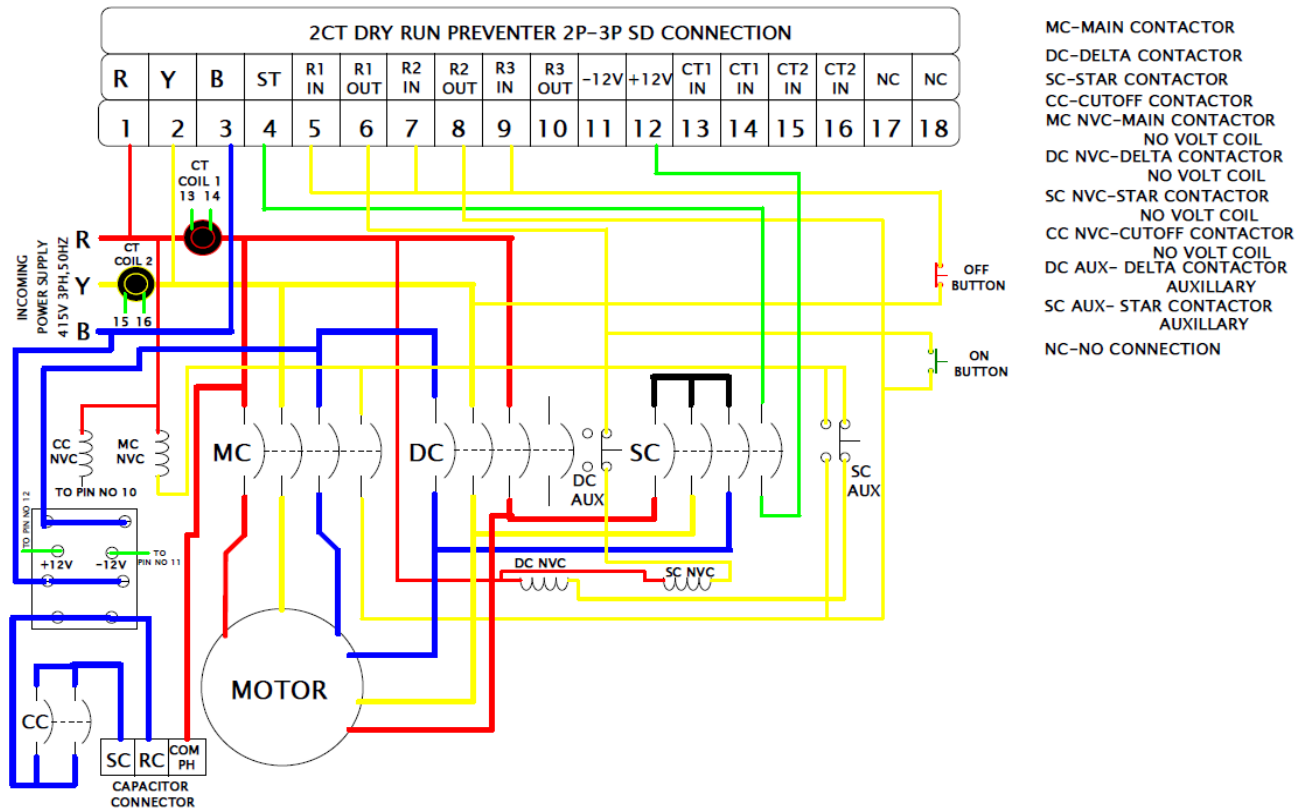
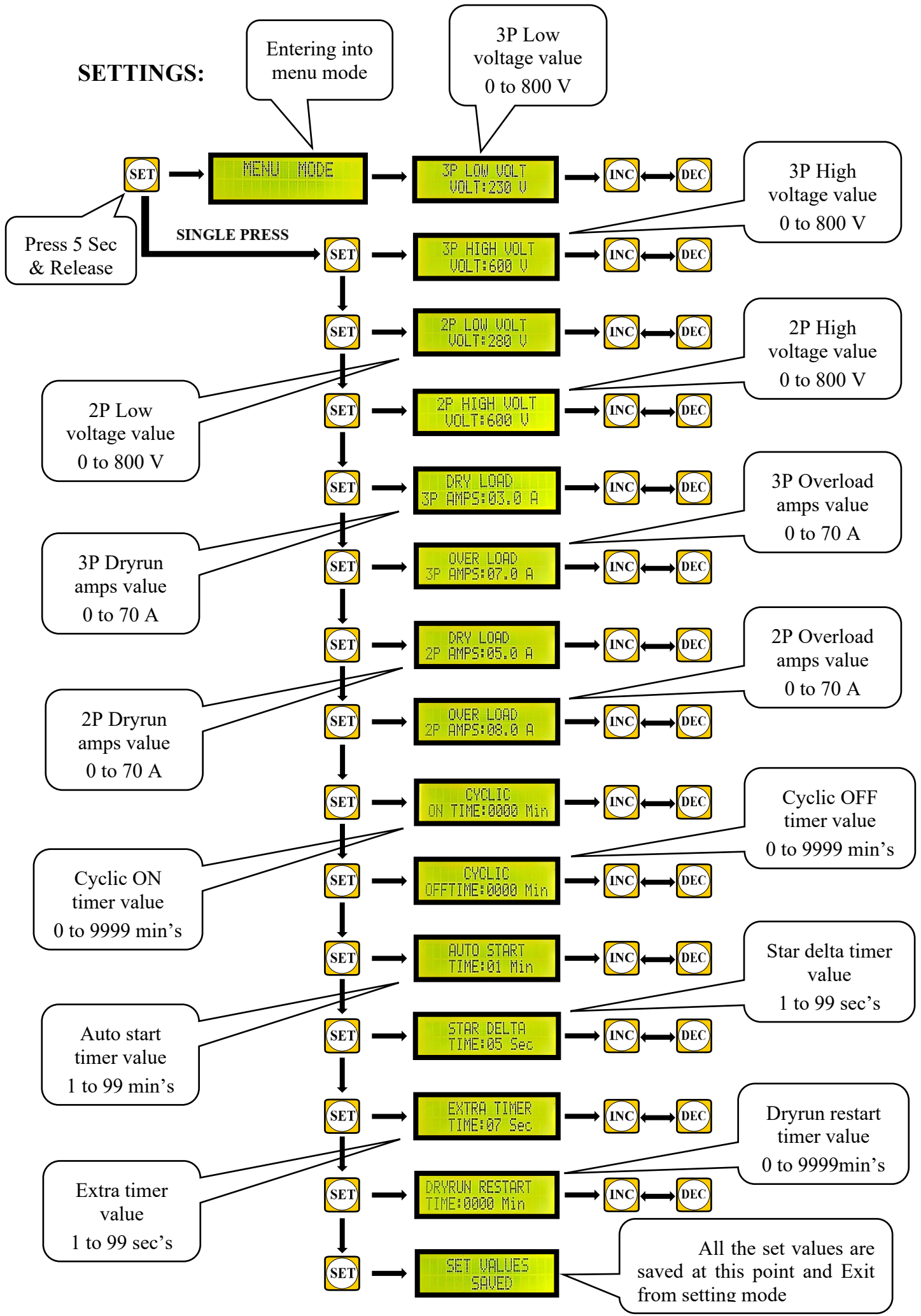


Fig 4: 2PHASE /3PHASE STAR DELTA STARTER CONNECTION DIAGRAM.

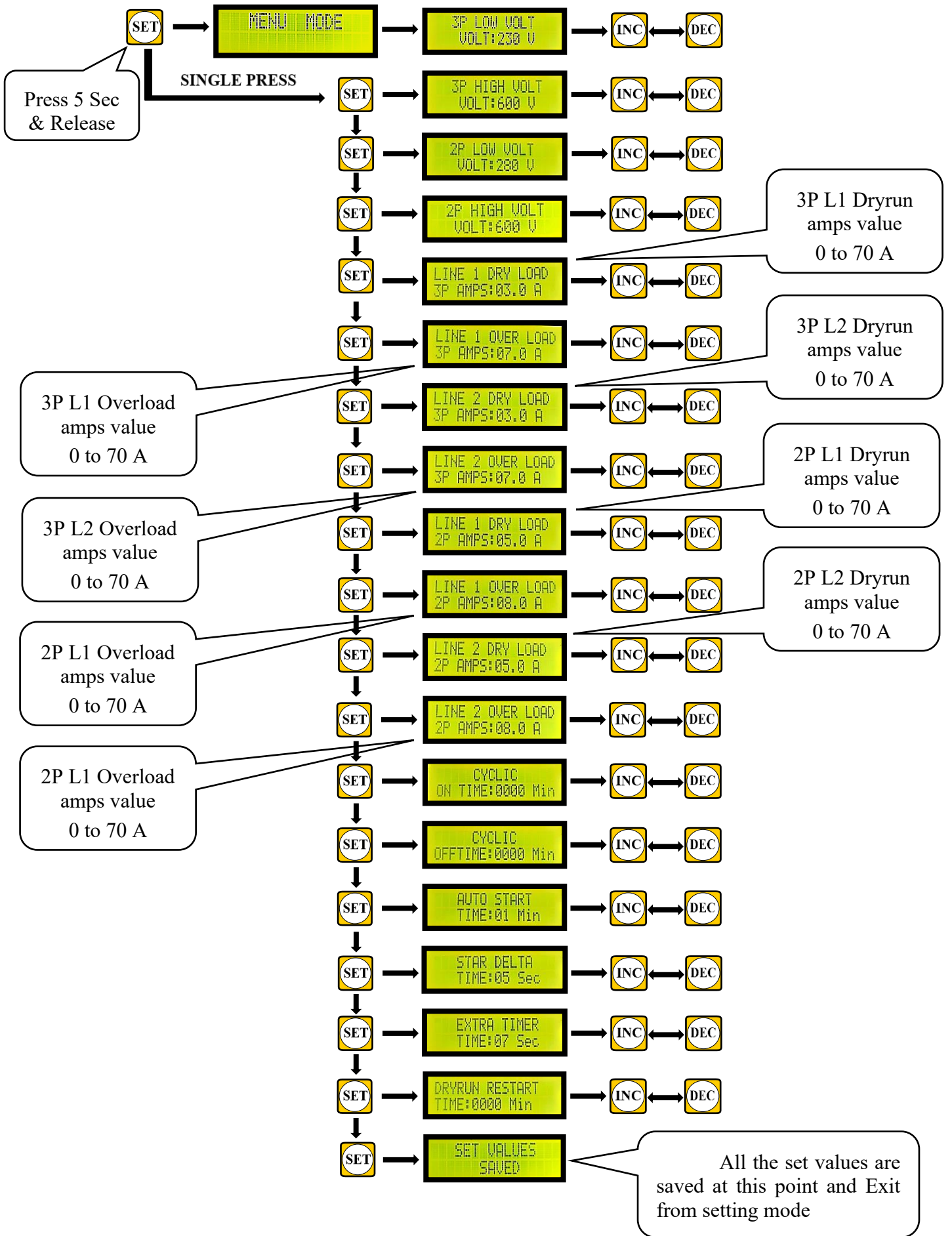


NOTE: ALWAYS DISCONNECT POWER BEFORE INSTALLATION OR MAINTENANCE.

SETTINGS:



INDIVIDUAL AMPS SETTINGS:



- In default condition, Common amps is enabled. To set individual amps, common amps should be disabled in the ADMIN settings.
- Long press SET & INC button for 5 sec to enter into ADMIN settings, then select the common amps settings as disable.
- All the step 1,2,3,4 are common then step 5,6,7,8 changed as shown above.

FAULT INDICATION AND SOLUTION:

DISPLAY	ABBRIVATION	SOLUTION
L1:426 L2:424 L3:422 DRY LOAD	DRYRUN FAULT	1. CHECK WATER LEVEL OF BOREWELL. 2. CHECK SETTINGS.
L1:426 L2:424 L3:422 OVR LOAD	OVERLOAD FAULT	1. CHECK MOTOR CONNECTION. 2. ENSURE GATEVALVE IS OPEN.
L1:426 L2:424 L3:422 AMP PROB	AMPS PROBLEM FAULT	1.CHECK CT COIL 2.CHECK MOTOR WIRING
LOW VOLTAGE MOTOR OFF	LOW VOLTAGE FAULT	1. CHECK INPUT VOLTAGE.
HIGH VOLTAGE MOTOR OFF	HIGH VOLTAGE FAULT	1. CHECK INPUT VOLATGE.
DIFFERENT VOLT B/W THE LINE	DIFFERENT VOLTAGE FAULT	1. CHECK R, Y AND B SEQUENCE. 2. INPUT VOLTAGE. 3. PHASE FAILURE.

Thank you for choosing the **DIGITAL PREVENTER - 2CT**. This user manual provides comprehensive information to help you operate and maintain your device effectively. If you have any further questions or require technical support, please contact our customer service team.



WARRANTY:

CUSTOMER NAME:

MOBILE NUMBER:

ADDRESS:

.....

SERIAL NO: BATCH NO:

E-MAIL:

PURCHASE DATE:

DEALER DETAILS:

***NOTE:**

WARRANTY NOT APPLICABLE FOR PHYSICAL DAMAGE, WATER DAMAGE, NATURAL DISASTER, HIGH VOLTAGE FROM MAINS AND THIRD PARTY REPAIRS.

----- NOTES -----

MANUFACTURED BY:

MOTO CONTROL SYSTEM

186-190,2nd Floor, Dr. Radha Krishnan Street, Tatabad, Coimbatore, Tamil Nadu 641012.

E-mail: info@motocontrolsystem.com Phone: 0422 4334445

Web: www.motocontrolsystem.com